



Dorchester Ranch 2,855 s.f. (approx)

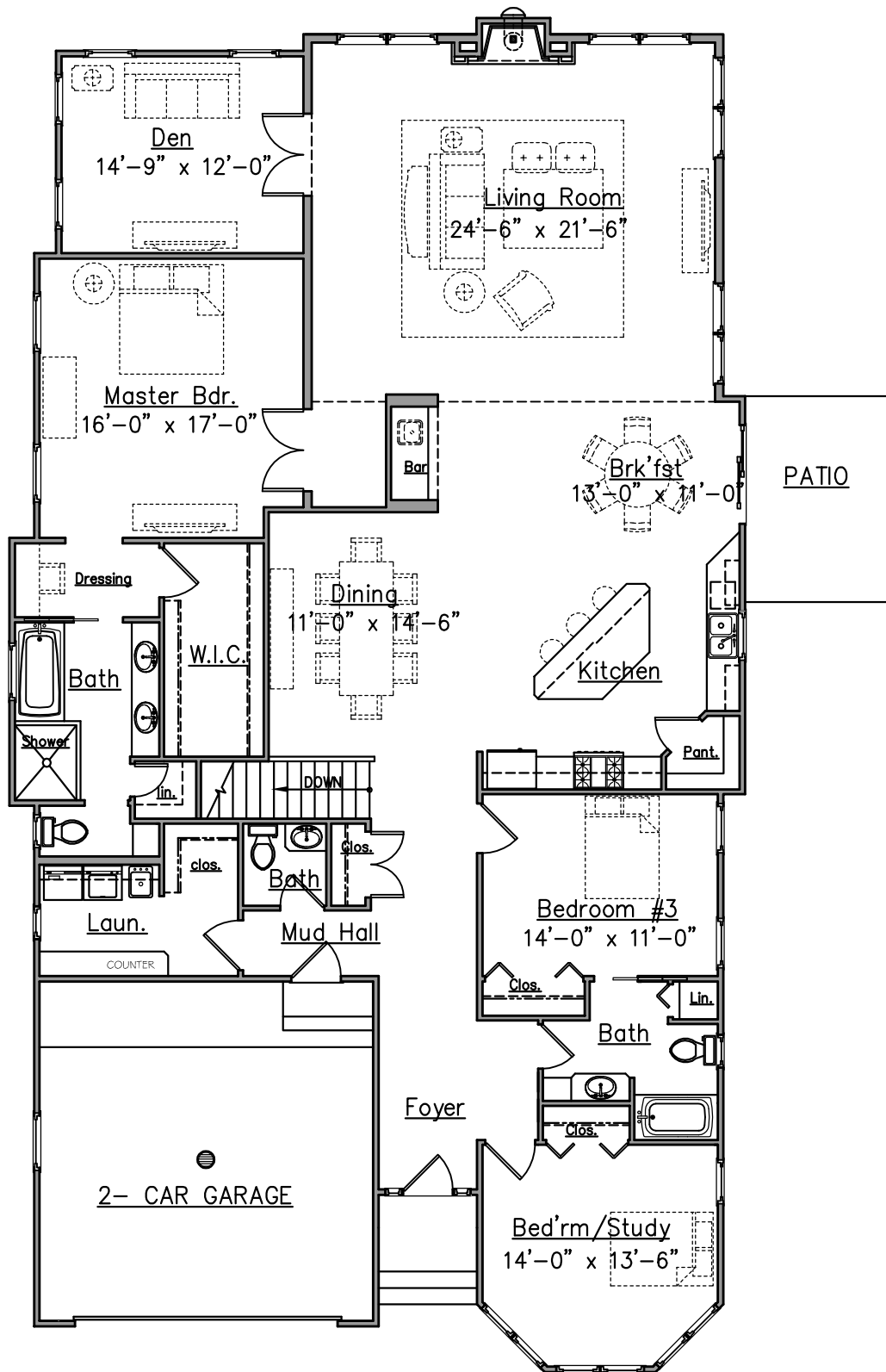
Sterling Lakes

PEPER PIKE, OHIO

BUILDER: MILLER HOMES

JOSEPH GIGLIO, ARCHITECT

MILLER HOMES RESERVES THE RIGHT TO MODIFY OR CHANGE PLANS, SPECIFICATIONS, AND FEATURES. THIS FLOOR PLAN IS FOR ILLUSTRATIVE PURPOSES ONLY AND NOT PART OF A LEGAL CONTRACT.



Dorchester Ranch 2,855 s.f. (approx)

Sterling Lakes
PEPER PIKE, OHIO

BUILDER: MILLER HOMES

JOSEPH GIGLIO, ARCHITECT

MILLER HOMES RESERVES THE RIGHT TO MODIFY OR CHANGE PLANS, SPECIFICATIONS, AND FEATURES. THIS FLOOR PLAN IS FOR ILLUSTRATIVE PURPOSES ONLY AND NOT PART OF A LEGAL CONTRACT.